



## Smart Designer Camera & Light

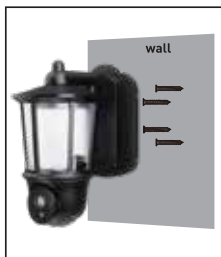




## ***3 Simple Steps to Set-Up and Protect***



Download the  
HOMEi  
App



Install Smart Designer  
Camera & Light  
onto an outside wall.



Connect your  
Smart Designer  
Camera & Light to  
the App by  
scanning QR code

**NOTE:** To ensure proper use of your Smart Designer Camera & Light please follow the instructions detailed in this set-up guide.

# Setting Up Your



Smart Designer  
Camera & Light

## Step 1: Download the HOMEi App

1. Download the **HOMEi** app in the Apple® App Store, Google® Play Store, or use your phone camera to scan the QR code below to open the app store of your mobile phone.

Apple® App Store or  
Google® Play Store



Scan Code





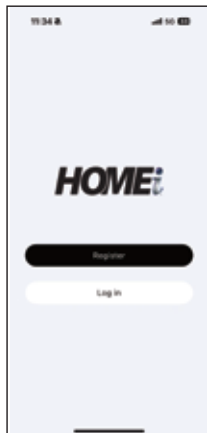
## Step 1: Download the HOMEi App

1. In order for your Smart Designer Camera & Light to work properly, select **Allow** if you see the prompt: **HOMEi** would like to find and connect to devices on your local network.
2. Create your account and select **Continue**.
3. Follow the App prompts to set up your password and register your account. Then **Log In** to your **HOMEi** app.

**Passwords must contain numbers and letters, be no less than six digits, and cannot contain special characters.**

### **FORGOT PASSWORD:**

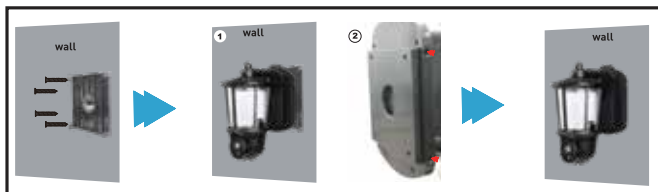
In the App click on "Forgot Password" and follow the account retrieval process. You will receive an email with a temporary code. Enter the temporary code. You will receive a second email with your password.





## Step 2: Mounting the Smart Designer Camera & Light

1. Use the provided screws to secure the mounting plate to a wall.
2. Then use the provided screws to secure your Smart Designer Camera & Light to the mounting plate.



3. Turn on the camera switch, your Smart Designer Camera & Light indicator light will flash.
4. Press the reset button on the bottom of your Smart Designer Camera & Light for about 5 seconds, wait for the PTZ self-test to complete, until you hear a “Reset successful, restarting!” sound.



**This unit is equipped with lithium batteries.  
Make sure that the camera is charged prior to installation**



## Step 3: Connect Your Smart Designer Camera & Light to the App

1. Press the  sign in the App



2. You will discover the ID number of the device, select “add to”



3. Select or enter your location's Wi-Fi® name, enter the password. If your Wi-Fi® is 5GHz, please set it to be 2.4GHz by tapping Change Wi-Fi®, then press Next Step in the App.





## Step 3: Connect Your Smart Designer Camera & Light to the App

4. The App will countdown until your Smart Designer Camera & Light and mobile device are reconnected to your Wi-Fi® network.



5. Enter the name of your Smart Designer Camera & Light, then click Done.



6. Now, you are ready to start using your Smart Designer Camera & Light!



# Setting Up Your

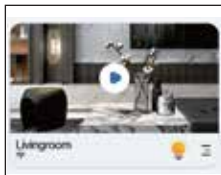


# Smart Designer Camera & Light

## How to Use your Smart Designer Camera & Light

To get started, open your **HOMEi** app and follow these easy steps:

1. Choose the device you want to control.
2. Tap the Light icon, one-button switch control light ON or OFF.
3. Select your camera Setting:
  - Click Lighting settings
  - Adjust Light brightness
  - 0%-100%





# Setting Up Your



# Smart Designer Camera & Light

**Warning:** Changes or modifications to this unit not expressly approved by the party responsible for compliance could void the user's authority to operate the equipment.

**NOTE:** This equipment has been tested and found to comply with the limits for a Class B digital device, pursuant to Part 15 of the FCC Rules. These limits are designed to provide reasonable protection against harmful interference in a residential installation. This equipment generates, uses and can radiate radio frequency energy and, if not installed and used in accordance with the instructions, may cause harmful interference to radio communications.

However, there is no guarantee that interference will not occur in a particular installation. If this equipment does cause harmful interference to radio or television reception, which can be determined by turning the equipment off and on, the user is encouraged to try to correct the interference by one or more of the following measures:

- Reorient or relocate the receiving antenna.
- Increase the separation between the equipment and receiver.
- Connect the equipment into an outlet on a circuit different from that to which the receiver is connected.
- Consult the dealer or a qualified radio/TV technician for help.

# Setting Up Your



**Smart Designer  
Camera & Light**

This device complies with Part 15 of the FCC Rules. Operation is subject to the following two conditions:

- (1) this device may not cause harmful interference, and
- (2) this device must accept any interference received, including interference that may cause undesired operation.

### **FCC RF Radiation Exposure Statement Caution:**

To maintain compliance with the FCC's RF exposure guidelines, place the product at least 20cm from nearby persons.

**FCC ID: 2A88H-0033052281**

**HVIN:**

**IC:**



## Smart Designer Camera & Light



2-Way  
Speaker



Wi-Fi®



Motion  
Detection



Secure  
App



Remote  
Viewing



340°  
View



Color  
Night Vision

FHD

Full HD  
3MP



Mobile  
Alert



Supports  
microSD Card

For instructional videos and FAQ's please visit  
**[icustomerservice.com](http://icustomerservice.com) to learn more.**

Distributed by Trend Makers, LLC • Fort Walton Beach, FL 32547

©2024 Trend Makers, LLC

Made in China

All Rights Reserved.



**WARNING:** Cancer and Reproductive Harm - [www.P65Warnings.ca.gov](http://www.P65Warnings.ca.gov)

By purchasing this product, you accept Trend Makers' terms and conditions including arbitration agreement.  
See enclosed for arbitration agreement. See [trendmakersinc.com/arbitration-agreement](http://trendmakersinc.com/arbitration-agreement) for details.

i\_SDCL\_IB\_ENG\_V1\_240820